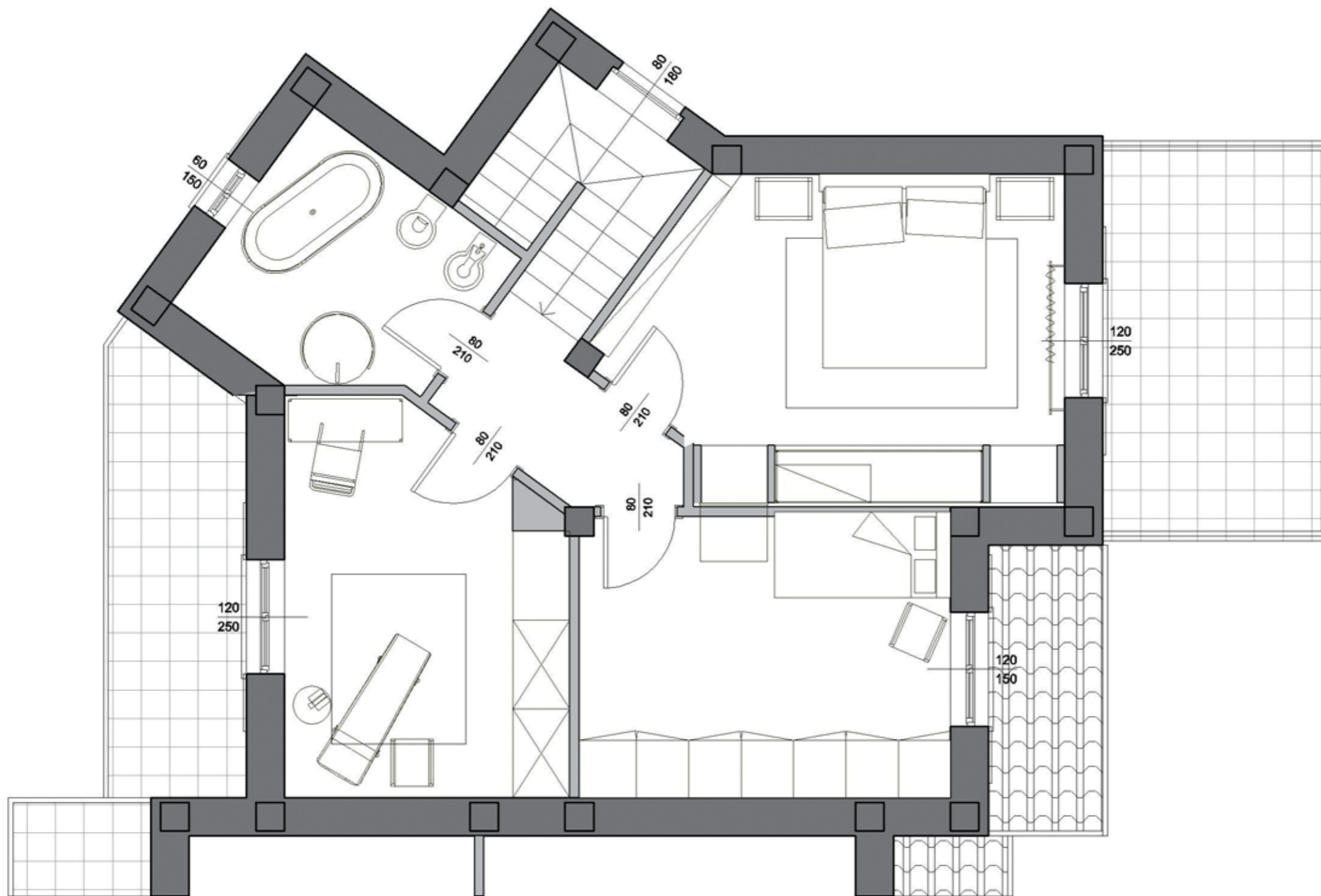
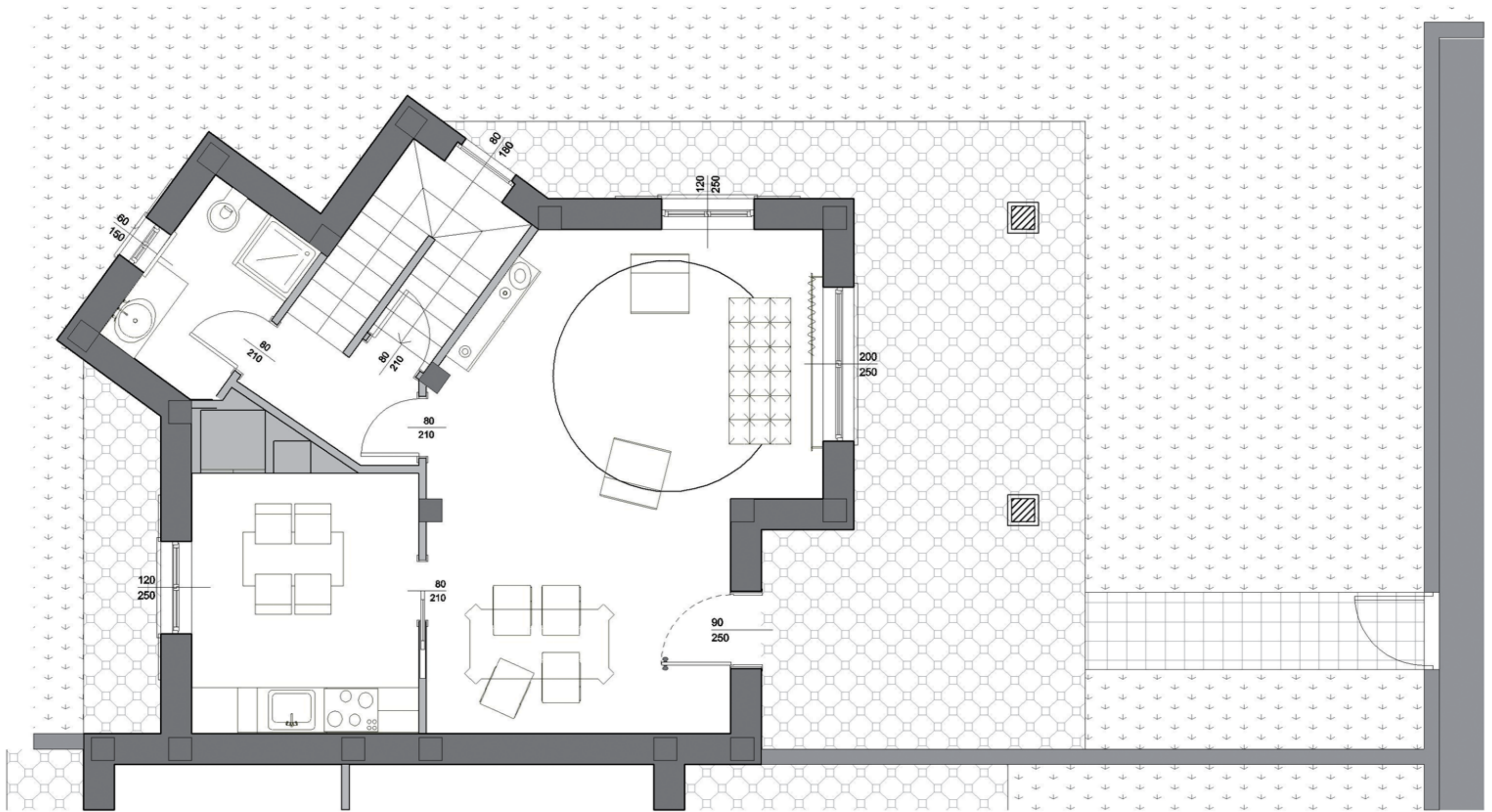


BIFAMIGLIARE "F"- VILLA 2
PIANO INTERRATO
sup. commerciale mq. 120.50



BIFAMIGLIARE "F"- VILLA 2
PIANO PRIMO
sup. commerciale mq. 65.85
sup. balcone e terrazza mq. 16.80



BIFAMIGLIARE "F"- VILLA 2
PIANO TERRA
sup. commerciale mq. 65.85
sup. portico mq. 9.60