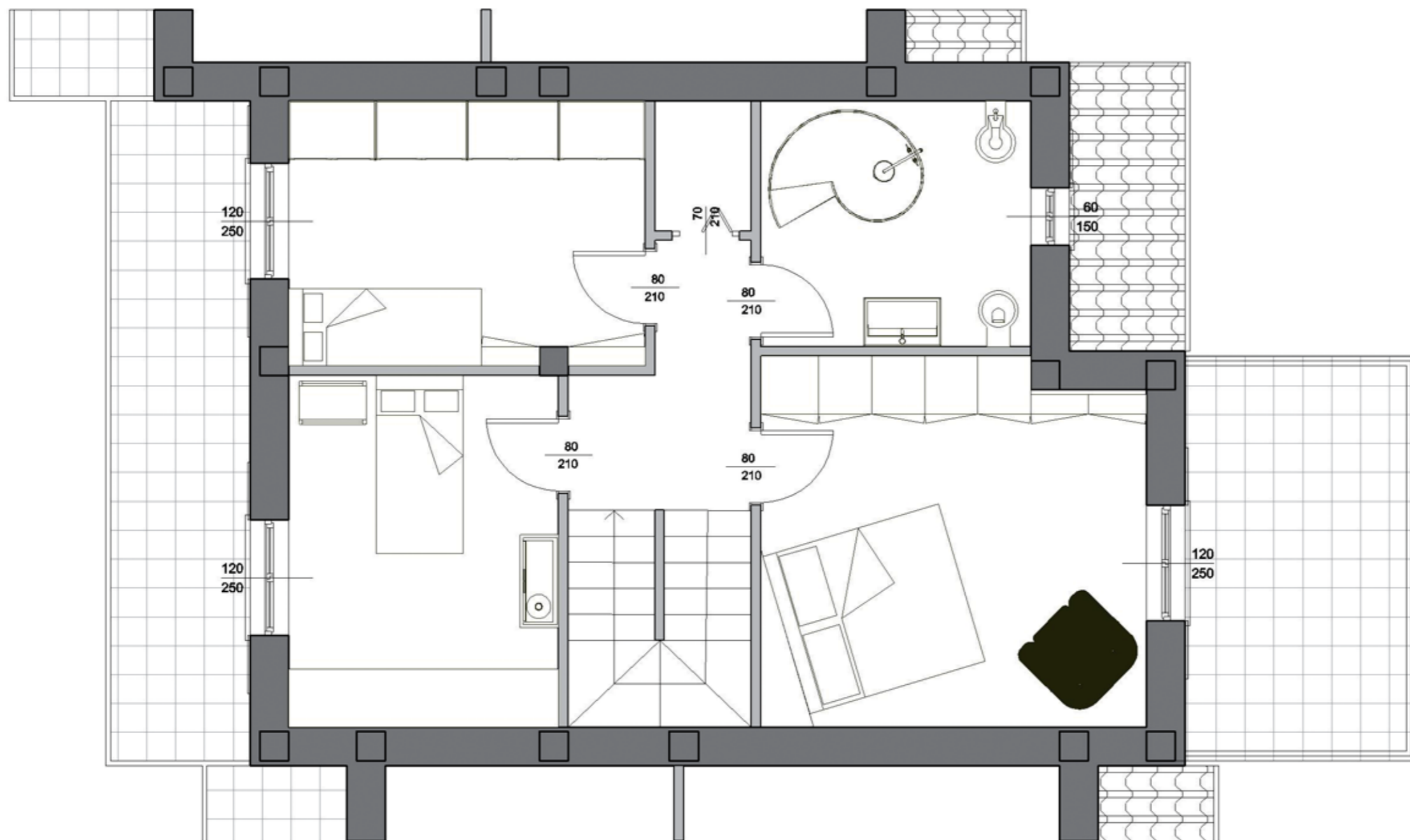
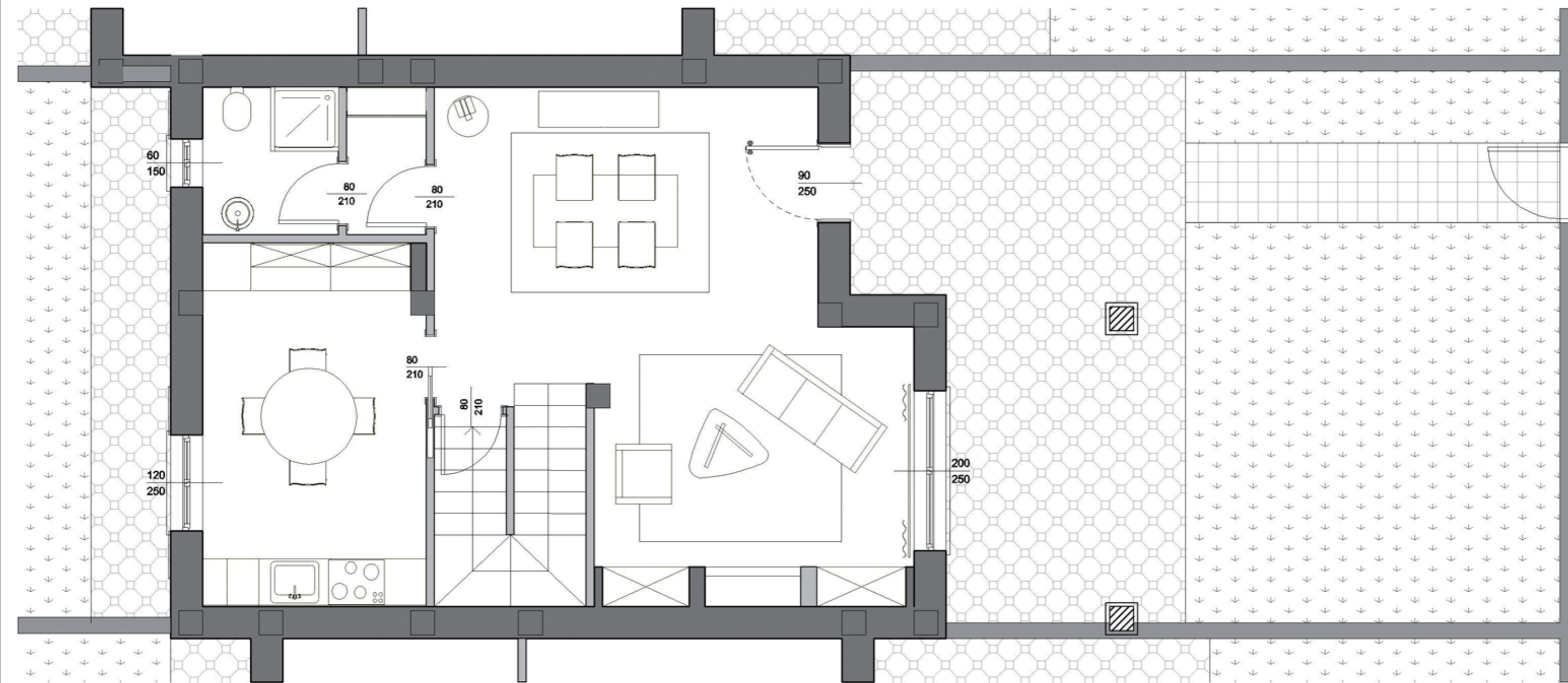


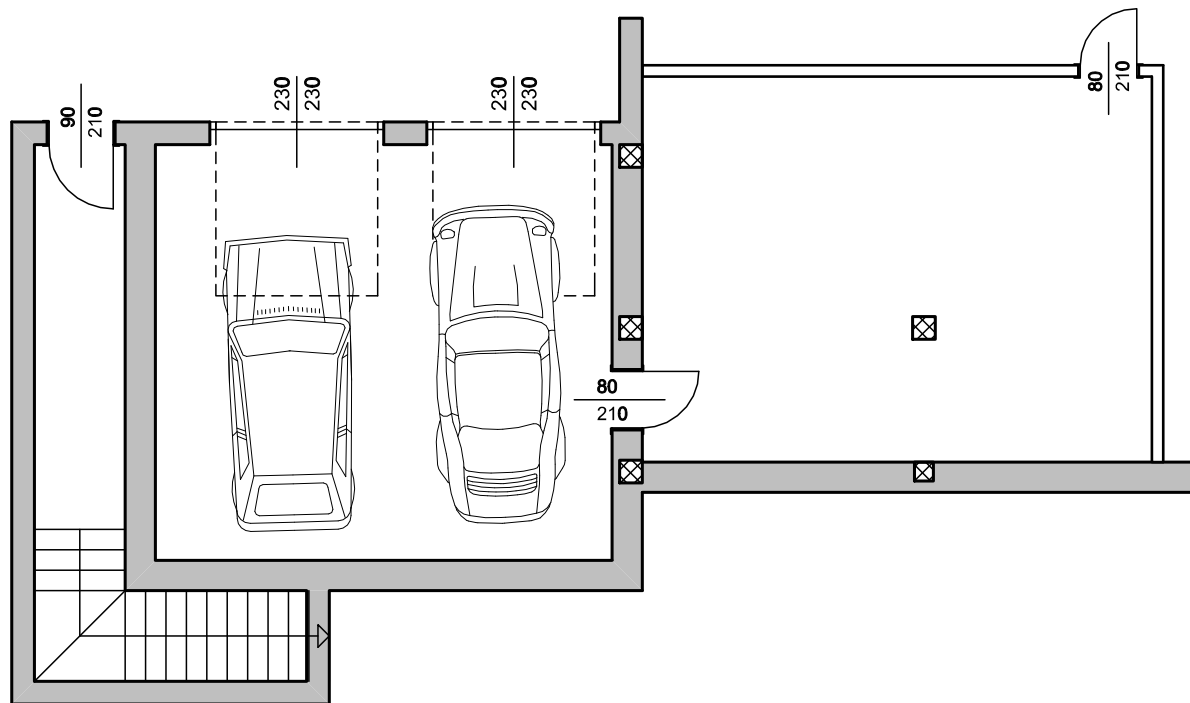
TRIFAMIGLIARE "E"- VILLA 2
PIANO INTERRATO
sup. commerciale mq. 101.20



TRIFAMIGLIARE "E" - VILLA 2
PIANO PRIMO
sup. commerciale mq. 63.57
sup. balcone e terrazza mq. 20.01



TRIFAMIGLIARE "E"- VILLA 2
PIANO TERRA
sup. commerciale mq. 63.57
sup. portico mq. 9.60



ZONA COMMERCIALE APP. "1"
PIANO INTERRATO
sup. commerciale mq. 78,84

ZONA COMMERCIALE APP. "1"
PIANO PRIMO

sup. commerciale mq. 106,25
sup. balcone mq. 67,31

